



Global Bike

SAP Model Company
SAP University Competence Center Magdeburg

What is Global Bike

The majority of our SAP teaching and learning environments are based on the fictitious bicycle company Global Bike.

By immersing students into realistic situations, Global Bike (formerly GBI) demonstrates how employees process typical business tasks of a medium-sized manufacturing process company in their every-day work environment. The data sets used are adapted to the level of learning groups and break down the complexity of SAP systems and business processes into understandable modules and learning steps.

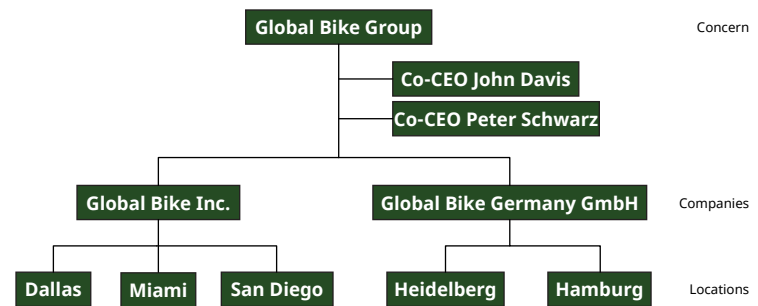
Since almost all UCC teaching and learning environments are based on the Global Bike model company, both lecturers and students benefit from a very high recognition value, especially when integrated into academic programs across courses and projects.



Structure and Layout

The structure and layout of all Global Bike teaching and learning environments are identical: Lecturers receive ready-to-use presentations to introduce basic knowledge as well as tasks, case studies and challenges for practical exercises in SAP systems. The teaching content is modular and can be used flexibly in academic courses. In addition, lecturers are provided with extensive information on solutions, troubleshooting and success monitoring.

Organizational Structure



Business Processes

- Sell – Fulfillment
- Buy – Procurement
- Make – Production
- Track – Financial Accounting
- Track – Controlling
- People – Human Capital Management
- Store – Inventory and Warehouse Management
- Maintain – Enterprise Asset Management
- Service – Customer Service
- Project – Project Management

Services for teaching, research and co-innovation

SAP University Alliances is a global program that provides more than 3,000 universities with free SAP software licenses for academic purposes. Within this program the SAP University Competence Centers (UCC) host SAP solutions for teaching, research and co-innovation.

In addition UCCs develop and manage academic teaching materials to assist lecturers and researchers. While UCCs assure 24/7 availability of complex system landscapes and support users closely, faculty members can fully concentrate on their core competences: teaching and research.

By using our scenario-based and practical curricula on latest SAP solutions, lecturers and students can reach their full potential. Our comprehensive teaching materials consist of presentations, case studies and hands-on exercises. Additional teaching tools facilitate continuous student assessments and foster group discussions.

Our experts can support you through all phases.

Contact

customer-relations@ucc.ovgu.de

SAP UCC Magdeburg
Otto-von-Guericke-University
Magdeburg
Universitätsplatz 12
39104 Magdeburg
Germany

Follow us:



SAP Certified

in SAP S/4HANA solutions operations and works with RISE with SAP

SAP Certified

in SAP HANA operations and works with RISE with SAP

SAP Certified

in SAP BTP operations and works with RISE with SAP

